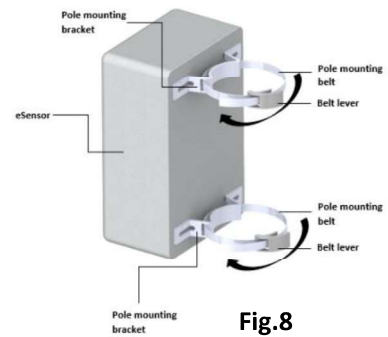


6. Installation Procedure

1. Mount the eSensor on a pole, minimum of 1 meter below the transformer.
2. Insert the pole mounting belt each into the slot of the upper and lower mounting bracket located at the back of the box as shown.
3. Wrap the belt around the pole. Tighten using the belt lever and close the lever to lock it in position.



4. Ensure to clean and dry the surface where the magnetic thermal sensor and label sticker will be installed.
5. Position and mount the flat side surface of the magnetic thermal sensor to the transformer body approximately 70mm(2.7") below the top lid of the transformer.
6. Install the included label sticker on the thermal sensor cable approximately bottom of the cable strain relief as shown.

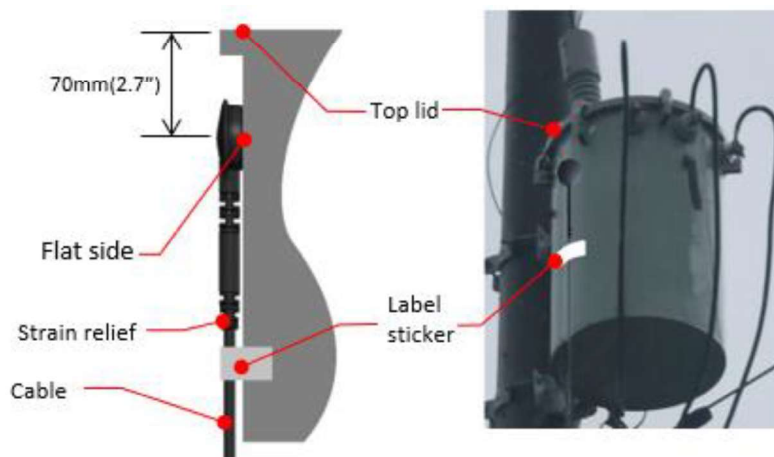
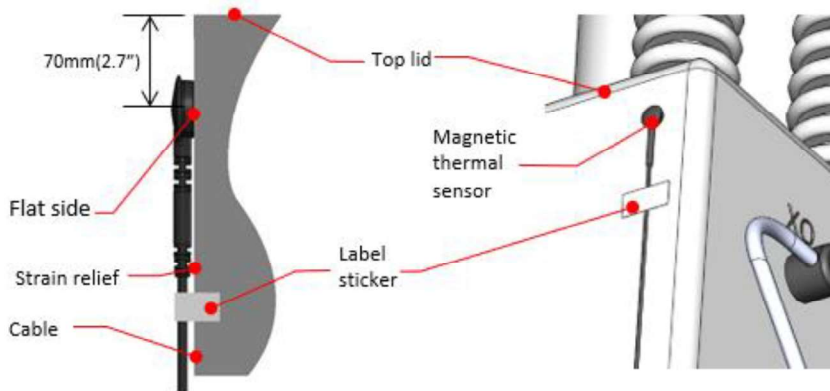
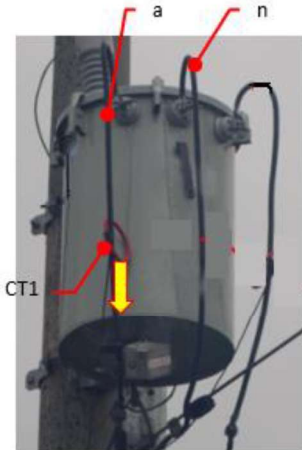


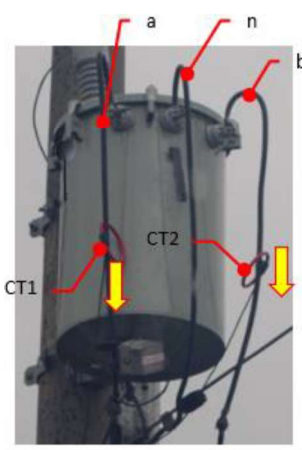
Fig.9

7. Install the eSensor's Rogowski CT's to the transformer's low voltage line and follow the correct CT direction. Refer to the CT's Arrow marking labels for the current direction.

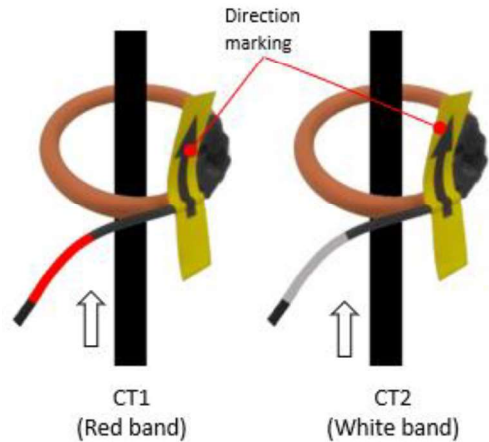
IMPORTANT: Wrong installation for the Rogowski current direction shall result to inaccurate measurement of the eSensor.



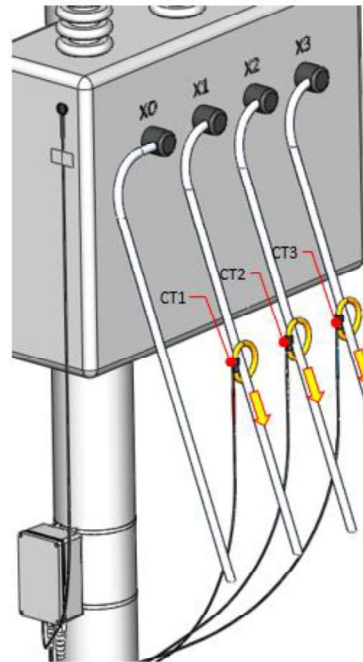
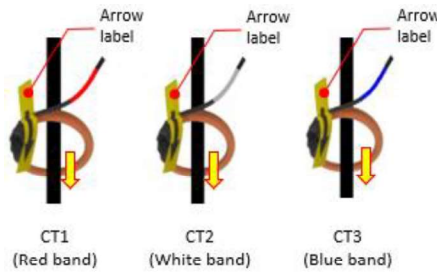
a. 1 Ph, 2 Wire Configuration



b. 2Ph, 3 Wire Configuration



CAUTION:
For 2Ph, 3Wire Configuration, install the CT1(red band) to L1 and CT2(white band) to L2 of the transformer. Refer to Fig. 10 b



3-Ph Line to Neutral

CAUTION:
For 3PH, 4 Wire (Neutral) Configuration, install the CT1(red band) to L1, CT2(white band) to L2 and CT3(blue band) to L3 of the transformer.

Fig.10

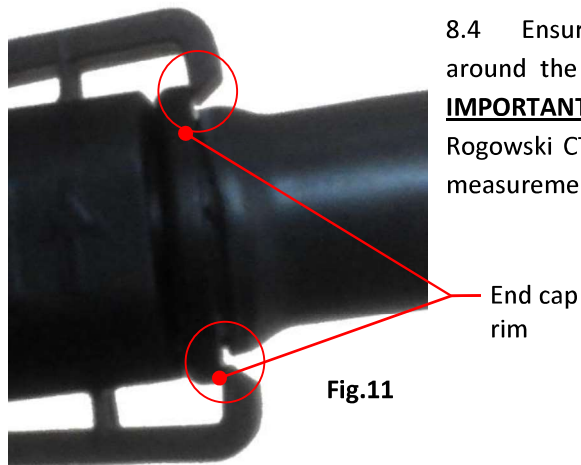
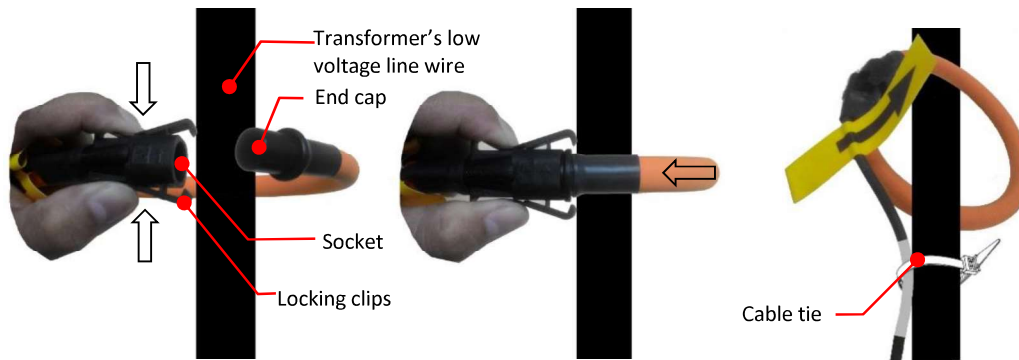
c. For 3 Phase, 4 Wire Configuration

8. Rogowski CT special installation instructions:

8.1 Press the locking clip and pull the CT plastic end cap out of the socket and wrap the CT around the transformer low voltage line.

8.2 While pressing down the locking clip, fully insert the CT plastic end cap back to the socket and release the locking clip.

8.3 Secure the Rogowski cable to the voltage line with the supplied cable tie.



8.4 Ensure that both the CT locking clips are engaged around the rim of the CT end cap as shown in Fig. 11.

IMPORTANT: Improper assembly may result to having the Rogowski CT detached from the socket leading to current measurement problem for the eSensor.

9. Connect the eSensor's voltage sense wires to the Neutral, L1, L2, and L3 of the transformer as shown in Fig. 12.

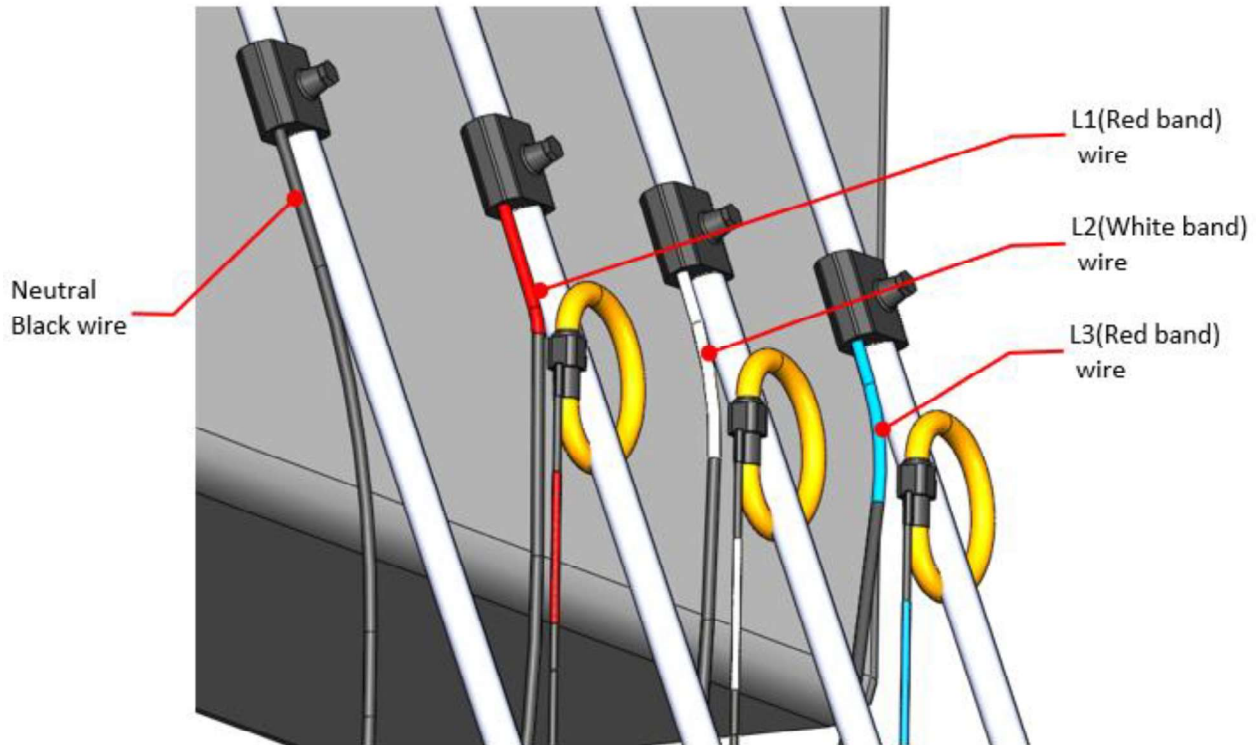


Fig.12

CAUTION:

Always connect the eSensor's Neutral sense wire to the transformer's Neutral line cable.

For 1-PH, 2 Wire Configuration, connect the eSensor's Red band to L1. Refer to Fig. 4



For 2-PH, 3 Wire (Neutral) configuration, connect the eSensor's Red band sense wire to L1 and White band sense wire to L2. Refer to Fig. 5

For 3-PH, 4 Wire (Neutral) Configuration, connect the eSensor's Red band sense wire to L1, White band sense wire to L2 and blue band sense wire to L3. Refer to Fig. 6

NEUTRAL WIRE:BLACK
L1=RED BAND WIRE
L2=WHITE BAND WIRE
L3=BLUE BAND WIRE

10. After completing the wiring install, the eSensor shall be up and running.