

edgeConX™ Electrical Energy Monitoring and Control

Full Energy Cloud Data GUI also to Smart Phones

Models: EE-404-Series



FEATURES

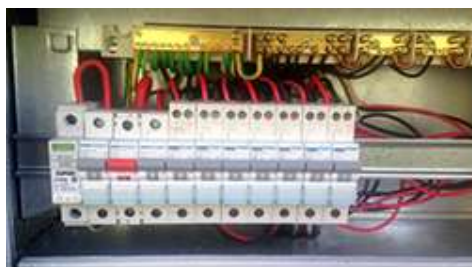
Full Data Analytics for Electrical Energy Consumption

- Supports IoT Centric Cloud Architecture with Web Graphical User Interface and Mobile Application
- For both Single and Three Phase Installations
- Wide Voltage Input - 100-480VAC
- Standard DIN package
- Six (6) Current Channel Inputs and Three (3) Voltage Channel Inputs
- Supports Current Transformers with 60A, 120A, 200A, 400A, 600A with standard protected 333mV output
- Class 1 Power Quality Data Accuracy
- Data Communication Variants – WiFi.
- Remote Firmware Update
- Measurement Category CAT III
- Product Life of 10 years
- Safety standard IEC 61010-1:2010 + AMD1:2016



DESCRIPTION

The edgeConX™ real time energy monitor device is a DIN mounted unit which is installed into the switchboard of a Residential or SME Commercial facility. The product will transmit full Power Quality and Energy data to a Cloud Database which is then used to provide usage analytics and energy insights to Customers via a mobile app experience. Any additional enhancement on its software can be updated remotely.



edgeConX™ Electrical Energy Monitoring and Control

Full Energy Cloud Data GUI also to Smart Phones

Models: EE-404-Series



Electrical Specifications	
Available Configurations	<i>Single Phase or Three Phase 4 Wire</i>
Electrical Frequency	<i>50/60Hz</i>
Rated Voltage	<i>100-275 VAC Line – Neutral 1-Ph 173-480 VAC Line-Line, 4 wire/3-Ph</i>
Rated Current	<i>60A, 120A, 200A 400A, 600A split core current transformers.</i>
Lightning Strike	<i>IEC61000-4-5 Class 1 500V</i>
Power Quality Data Accuracy	<i>± 1% + 0.1 Amps</i>
Power Factor Accuracy	<i>± 1 degree</i>
Power Quality Measurements	<i>vTHD, iTHD, individual harmonics up to 15th order</i>
Measurement Interval	<i>1 – 150 second (configurable) @ 1sec data point Default 30 seconds.</i>
Energy Transmission	<i>5 second – 15-minute intervals (configurable) Default 60 seconds</i>
Communication Outage data logging	<i>10 days of 15-minute interval data stored if offline and uploaded to server once reconnected.</i>
Current Sense Channels	<i>1 – 6 channels; Single Phase and Three Phase.</i>
Operating Temperature Range	<i>-10 to 60 °C Ambient</i>
Data and Event Logging	
Power Quality Data	<i>Critical Parameters: Voltage per line, Current per channel, Power per channel, Power Factor per channel, THD per voltage and current channel Non-Critical Parameters (per minute instantaneous): Frequency per line, Harmonics per current & voltage channels (odd harmonics from 3rd to 15th)</i>
Event Logging	<i>Over Voltage: >253V Under Voltage: <216V Over Frequency: >52 Hz Under Frequency: <48 Hz Over Voltage THD: >5%</i>
Connectivity	
Communications Options	<i>WiFi</i>
Communications Architecture	<i>Periodic reporting to a central IoT Cloud server</i>
Systems Logs	<i>Fully configurable measurement interval with 10 days Communication Outage Data Retention</i>

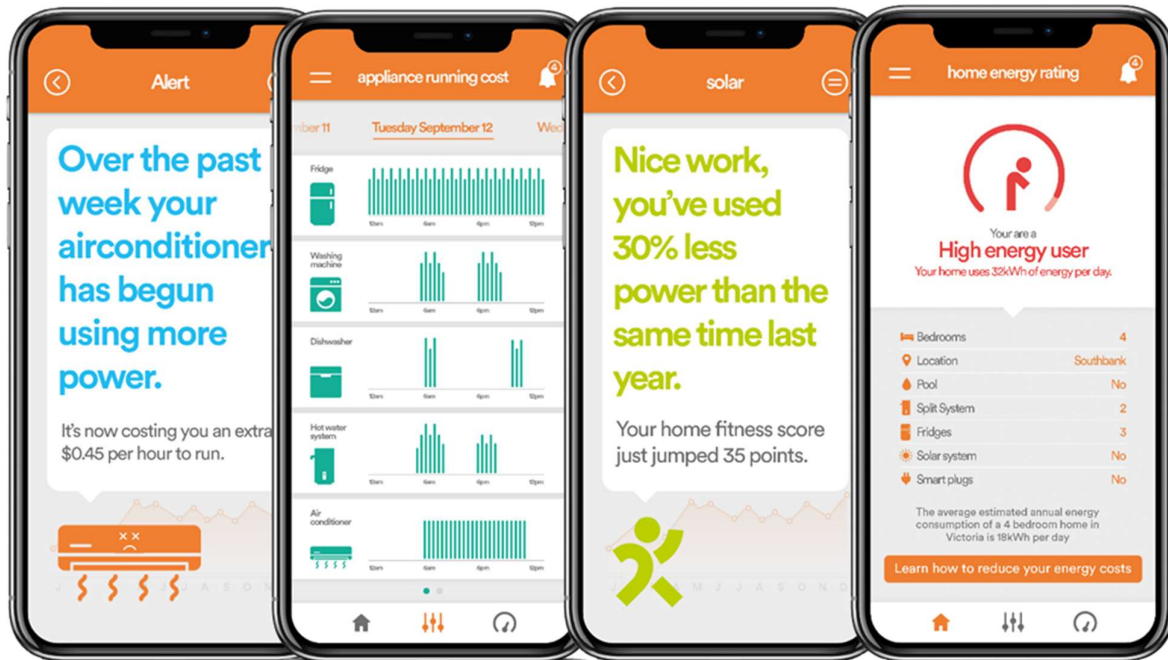
edgeConX™ Electrical Energy Monitoring and Control

Full Energy Cloud Data GUI also to Smart Phones

Models: EE-404-Series



GRAPHICAL USER INTERFACE



edgeConX PART NUMBERS – EE-404-XXX

White Enclosure		Black Enclosure	
4G	WiFi	4G	WiFi
EE-404-005	EE-404-006	EE-404-007	EE-404-008

Contact
 Edge Electronics Limited
www.edgeelectronics.com